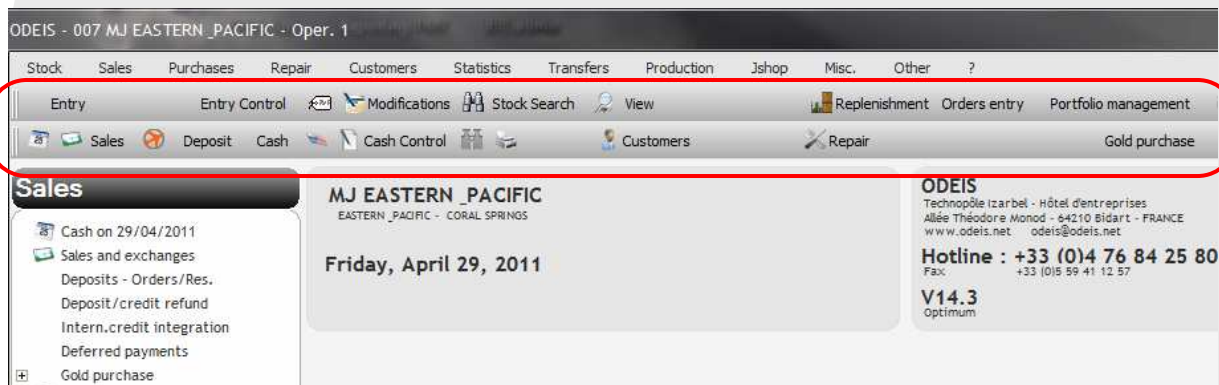


FUNCTIONALITY RULES

You can customize your work environment.
This customization is specific to each post.

CUSTOMIZING THE ICONS



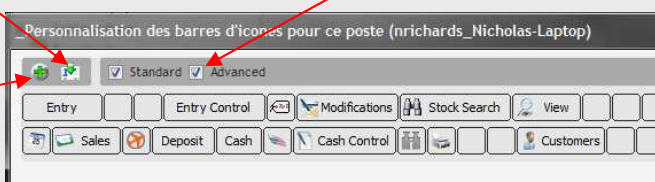
Customizing the icons is done using the menu "Miscellaneous - Settings – Icon Toolbars."

The install wizard allows you to:

- Reuse another user's icons
- Use the default icons

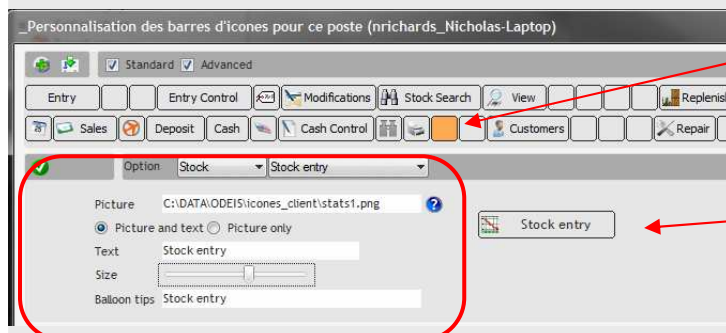
The "Standard" mode will suggest a row of icons.
The "Advanced" mode will suggest two rows of icons.
You can also leave blank for no icon.

Add an icon.



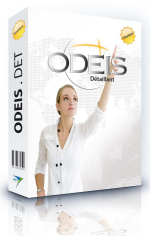
When adding an icon, you must choose a location and define:

- The function of the icon.
- The image used (Odeis offers a selection of images in the folder "client_icons").
- The presence or absence of the text.
- The size of the icon.
- The tooltip.

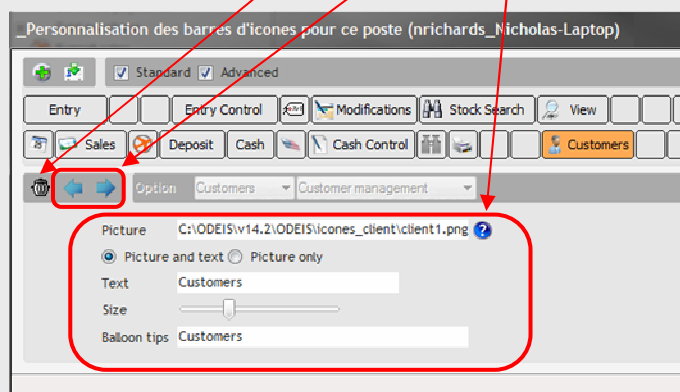


Space selected for the icon

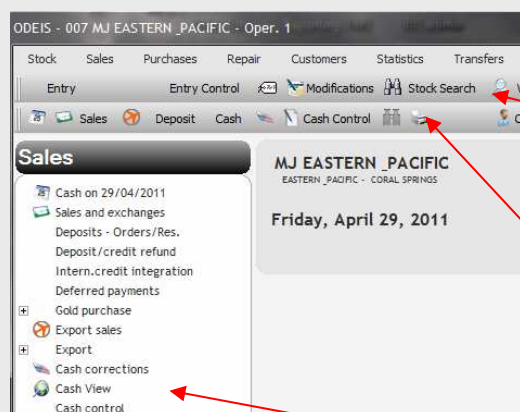
Preview of the icon about to be created



By selecting an existing icon, you can delete, move or change its characteristics.



Tip : You can also access the management icons by right-clicking in the home menu:



Right click on the icon to modify it (or delete it).

Right-click in the toolbar to access the management icons.

Right click on the line to create an icon for the function.



CUSTOMIZING THE HOME PAGE MENU

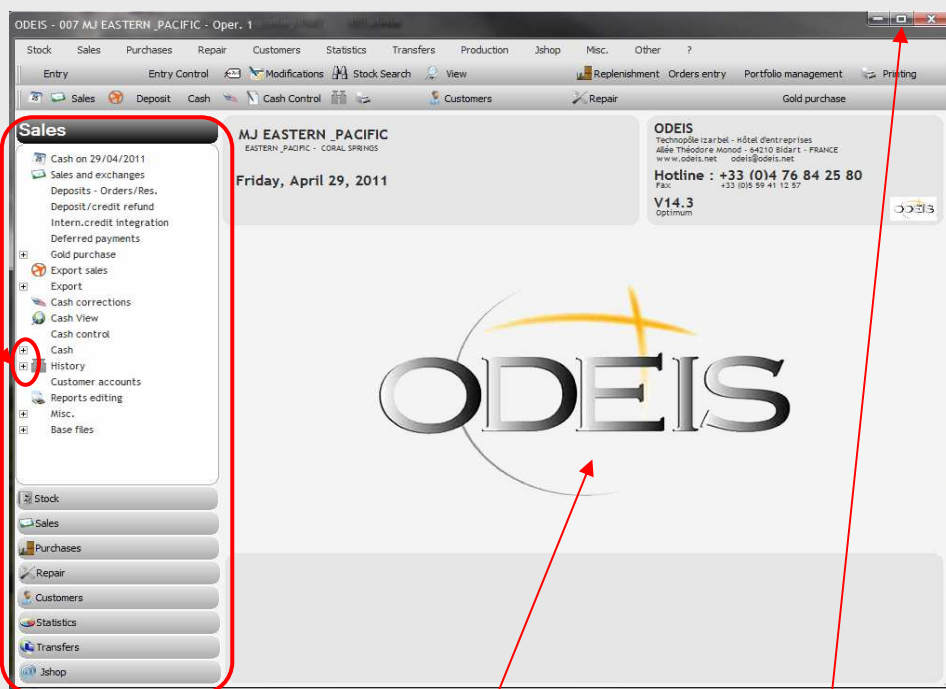
You can backup your work environment:
Menu "Miscellaneous - Settings – Save the Window".

Details included in the Backup:

- The size of the Home page window.
- The positioning of the window.
- The choice of the Explorer bars.
- The structure of all Explorer bars.

Structure. Here, the line "History" is unhidden to allow access to the selective research and article research functions.

Exploration windows. Here the "Sales" window has been selected.



A right click on the logo allows you to change your home page image.

Window size modification.