



# ODEIS RETAILERS

*Taking photos Webcam*





### CONFIGURATION AND IMPLEMENTATION

#### 1) - ODEIS imaging configuration:

Miscellaneous -> Settings -> Configuration settings -> Pictures Tab

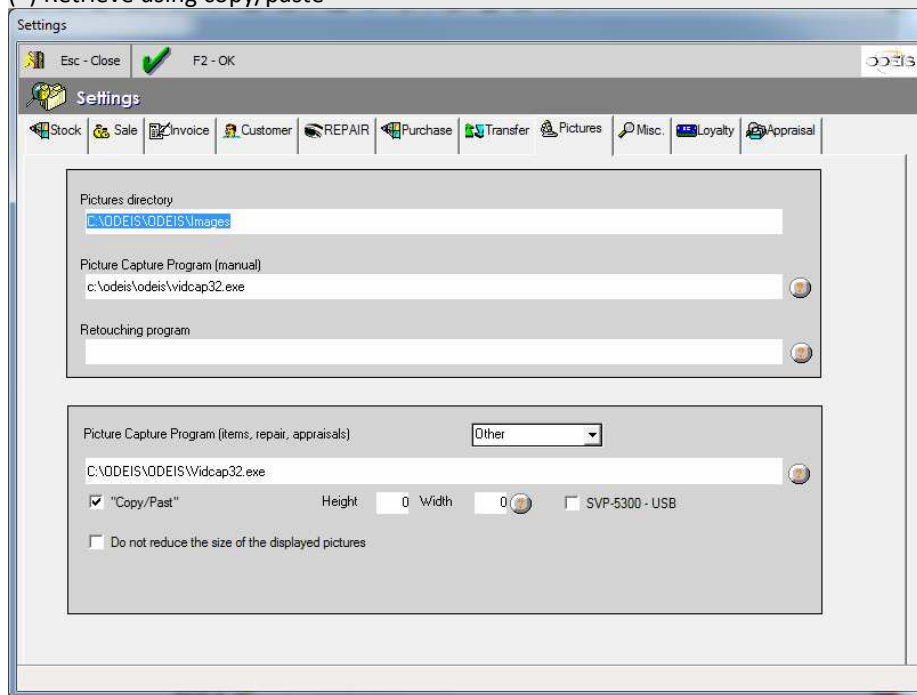
Fill in the compulsory fields

Imaging directory: by default c:\logibij\images

Photo taking program: by default c:\logibij\vidcap32.exe

Height/Width: must be identical to the webcam setting

(\*) Retrieve using copy/paste



#### 2) - ODEIS supplier configuration:

Miscellaneous -> Base files -> Vendors

In the tab "Further information" from the vendor file

If you tick the field "Picture management per label"


Each label in stock will have a distinct image

If not

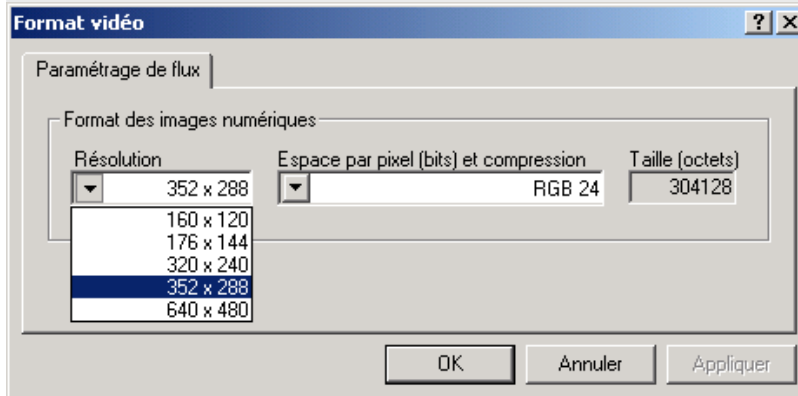
A unique image will be associated with an equivalent Supplier/Supplier ref.  
(default method).



### 3) - Webcam configuration:

Launch the photo taking program from ODEIS (for example Stock -> Modification -> )  
The photo taking program is then launched.

To configure the format of the image required: Options -> Video Format -> Resolution  
For example 352x288 corresponds to an ODEIS setting: Height=288 Width=352  
640x480 corresponds to an ODEIS setting: Height=480 Width=640



#### Webcam Characteristics

Sensor	CMOS 2MP
Maximum opening of the lens	F: 2
Lens viewing angle	70 degrees
Lens design	5 elements
Automatic development	Yes
White balance	2 600 - 7 600 k
Minimal brightness	< 2 lux
Data format	YUY2, MJPEG
Colour intensity	16 bit
Resolution	2 MP
Photo resolution interpolated	8 MP
Digital zoom	8x
Face recognition	Yes
More than 2 pixels	Yes
Natural Digital Motion	Yes
Shutter release	Yes
Operation/stop light	Yes
Cable length	2.1 metres
Interface	USB 1.1, USB 2.0
Feed	By USB cable
Configuration required:	Windows XP SP2 - Vista




### 4) - Photo taking in ODEIS

It is possible to take photos of

- articles in stock
- repair files
- production files

The principle of taking photos is simple,

- after clicking on the camera button  in one of the ODEIS functions
- the photo taking program is then launched.



- Take the photo using Edit -> Copy (or by CTRL C on the keyboard)
- Close the camera window
- The photo is then automatically retrieved by ODEIS and copied into the images folder (in a sub-folder <supplier code> (example c:\logibij\images\ROLE, for the supplier code ROLE)

Note: if the image is freeze framed, select Options -> Preview