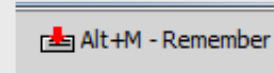




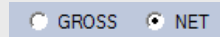
GENERAL INFORMATION

Common functions for different statistics:

- Memorisation of search criteria by clicking on the icon "Remember".

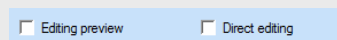


Only the options are memorised Option =>

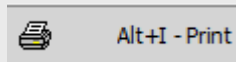


- Print preview or print results directly

With all the statistics, it is possible to view the results on the screen before printing or editing the results directly



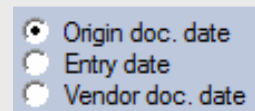
- Exporting to EXCEL



It is possible to export the statistic results to EXCEL in order to reformat the values, calculate new ratios etc (knowledge of Excel essential)

- The calculation of values (Stock and Sales) with or without VAT

- Selecting the calculation for the number of days in stock



- Origin doc. date : corresponds to the input date in the area 'article date' in the oldest stock file.
- Entry date: corresponds to the date the product is input on the system.
- Vendor doc. date: corresponds to the input date in the area 'article date' in the stock file.



ACTIVITY COMPARISON

Activity Comparisons can be found in the menu:
Statistics - "Activity Comparison"

1) - Function

Compare the turnover achieved over the last 3 years on a monthly basis.

2) - Preview screen

Activity comparison window showing a table of monthly turnover and sales data. The table includes columns for Month, Turnover (2009, 2010, 2011), Ev. % (11/09, 11/10), Sales (2009, 2010, 2011), Ev. % (11/09, 11/10), Average S.P. (2009, 2010, 2011), Ev. % (11/09, 11/10), Days, TO / days, and a Total/Progressive row.

Month	Turnover			Ev. %		Sales			Ev. %		Average S.P.			Ev. %		Days	TO / days	
	2009	2010	2011	11/09	11/10	2009	2010	2011	11/09	11/10	2009	2010	2011	11/09	11/10			
January			157 775					18					8 765			2	78 888	
February			245 737					23					10 684			3	81 912	
March			243 042					20					12 152			3	81 014	
April			180 673					14					12 905			6	30 112	
May			-22 526													2	-11 263	
June			9					1					9			1	9	
July			124 515					6					20 752			3	41 505	
August			60 059					13					4 620			6	10 010	
September			1 140					1					1 140			1	1 140	
October																		
November																		
December																		
Total																		
Progressive			990 424					96					10 317			27	36 682	

3) - Selection screen

Analysis period (over a 12 month period). Calendar or tax year

Date limit in month for calculating the progressive total

Allows for the search to be quickened by not calculating the stock values

Allows for values to be displayed with or without VAT

Calculation method for change

Selection of monitoring, statistic and style codes

Choice of print settings

Selection screen showing various filters and options. The screen includes sections for Selection (GROSS/NET, 12 months period, Sales until), Categorie (0 to ACO), Vendor, Track code, Stat code, Style code, Metal colour, All categories, Calculation of the stock values, N/N-1 and N/N-2 Evolution, Gifts, and Editing options (Editing preview, Direct editing, Editing remarks).



4) Screen results

It is possible to display different information:

- Average selling price
- Margin excl. VAT
- Margin in %
- Quantity in stock

Activity comparison

Esc - Close F3 - Cancel F6 - Other page Alt+I - Print Alt+G - Graph Alt+M - Remember

Activity comparison

Display information

Sales

☒ Stock ☒ Stock excl. ☒ Repair

☒ Average S.P. ☐ Margins (%) ☐ P.P. Stock

☐ Margin NET ☐ Stock ☐ S.P. Stock

Month	Turnover			Ev. %		Sales			Ev. %		Average S.P.			Ev. %		Days	TO / days
	2009	2010	2011	11 /09	11 /10	2009	2010	2011	11 /09	11 /10	2009	2010	2011	11 /09	11 /10		
January			157 775					18					8 765			2	78 888
February			245 737					23					10 684			3	81 912
March			243 042					20					12 152			3	81 014
April			180 673					14					12 905			6	30 112
May			-22 526													2	-11 263
June			9					1					9			1	9
July			124 515					6					20 752			3	41 505
August			60 059					13					4 620			6	10 010
September			1 140					1					1 140			1	1 140
October																	
November																	
December																	
Total																	
Progressive			990 424					96					10 317			27	36 682

5) - Print result (and calculation mode)

Average selling price
 Average = $\frac{\text{Turnover}}{\text{amount of sales}}$

DINH VAN - PAIX
 16, rue de la Paix
 75002 PARIS
 Tél: 01 42 61 74 49
 R.C:

Consolidated sale activity comparison table TTC

Period : du 01/01/2011 au 31/12/2011
 Categ. 000 to categ. ACO; Gifts inclosed

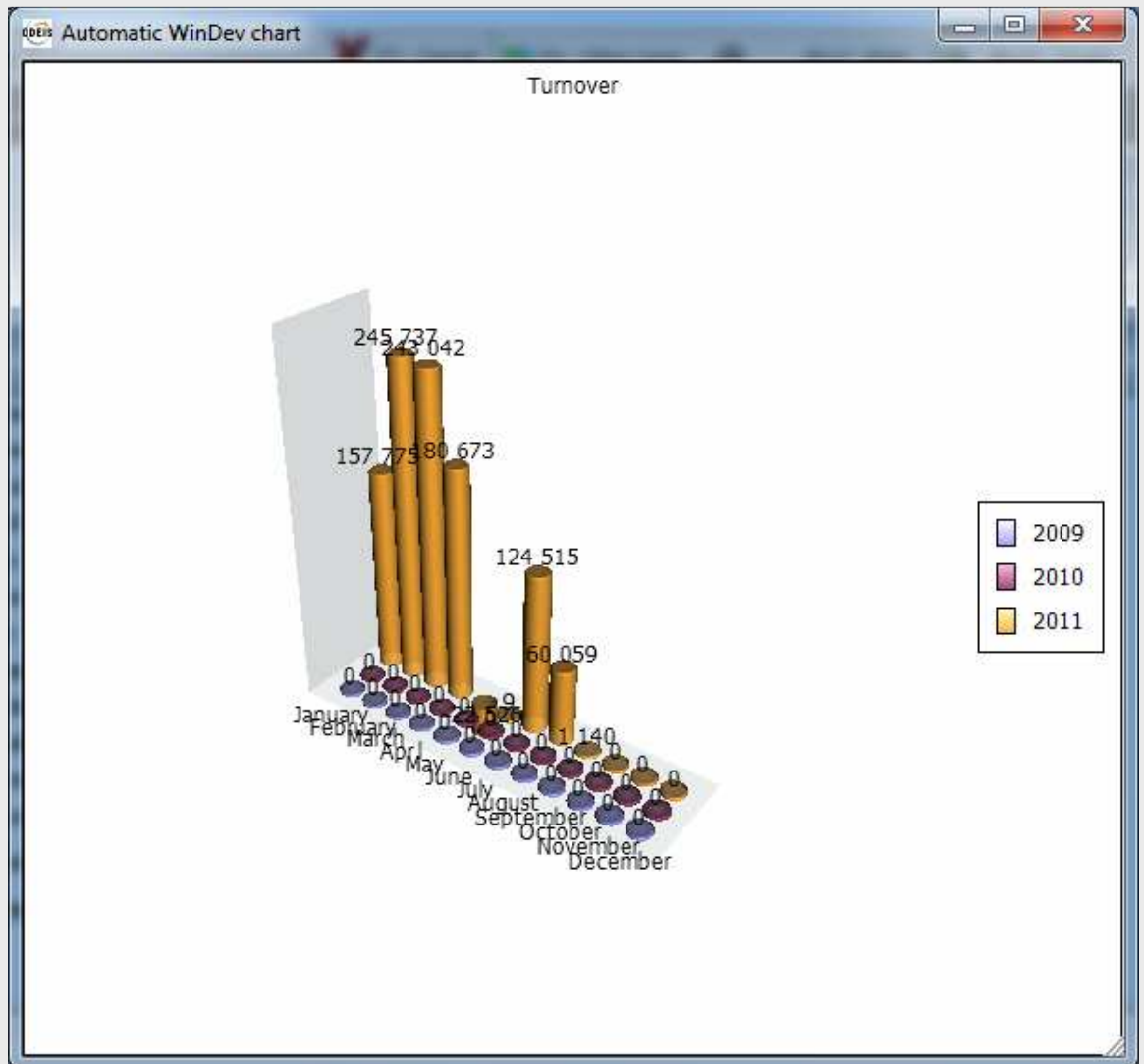
Date 13/09/2011
 Page: 1

	Turnover			Evolution		Amount of sales			Evolution		Average S.P.			Evolution		Moyenne 2011	
	2009	2010	2011	11/09	11/10	2009	2010	2011	11/09	11/10	2009	2010	2011	11/09	11/10	Days	TO / day
January			157 775					18					8 765			2	78 888
February			245 737					23					10 684			3	81 912
March			243 042					20					12 152			3	81 014
April			180 673					14					12 905			6	30 112
May			-22 526													2	-11 263
June			9					1					9			1	9
July			124 515					6					20 752			3	41 505
August			60 059					13					4 620			6	10 010
September			1 140					1					1 140			1	1 140
General																	
Progressive			990 424					96					10 317			27	36 682

Months accumulated until the last day
 of the sales period (limit date)



6) - Graph:





PERFORMANCE TABLE

The performance table can be found in the menu:
Statistics - "Performance Table"

1) - Function

Establish a classification by turnover, by number of sales or by % margin of performances (product line, family, supplier, price range or style codes) according to a sales period.

2) - Preview screen

Results table

Esc - Close F2 - OK F6 - Other page Alt+M - Remember ODEIS

Results table

sorted

☒ Code ☐ T.O ☐ Sales ☐ Margin % ☒ Stock
☐ firsts ☐ Assets ☐ Stock excl.
☐ Repair

Edit

☐ Editing preview ☐ Direct editing ☒ €
☐ €

Selection

Results ☒ Section ☐ Sub-section ☐ Category ☐ Vendor ☐ Price ranges ☐ Style code

Sale from: 01/10/2010 to 13/09/2011 Selling price: 0 to 99 999 999

Categ.: 001 to ACD ☐ All categories

Vendor: ☐ Exc.

Statistics code: ☐ Exc.

Track. code: ☐ Exc.

Style code: ☐ Exc.

Stat. code: ☐ Exc.

MKG. Action: ☐ Exc.

Stock values ☒ SELLING PRICE ☐ Purch. price ☒ Rotation

☐ No calculation ☐ On the period ☒ End of month September 2011 ☐ Average / Profitability

Amount of days in: ☒ Original doc. ☐ Entry date ☐ Vendor doc. ☐ Do not calculate the evolution

Vend. cons. in stock: ☒ Incl. ☐ Exc. ☐ Only Store cons. in stock: ☒ Incl. ☐ Exc. ☐ Only

Vend. cons. sold: ☒ Incl. ☐ Exc. ☐ Only Store cons. sold: ☒ Incl. ☐ Exc. ☐ Only

Export: ☒ Incl. ☐ Exc. ☐ Only Gifts: ☒ Incl. ☐ Exc.

Export NET: ☒ Incl. ☐ Exc. ☐ Only Editing option: ☒ GROSS ☐ NET

_Ventes: ☒ Incl. ☐ Exc. ☐ Only



3) - Selection screen:

General

Selection

Results: ☒ Section ☐ Sub-section ☐ Category ☐ Vendor ☐ Price ranges ☐ Style code

Sale from: 01/10/2010 to 13/09/2011 Selling price: 0 to 99 999 999

Categ.: 001 to ACD ☐ All categories

Vendor: ☐ Exc.

Statistics code: ☐ Exc.

Track. code: ☐ Exc.

Style code: ☐ Exc.

Stat. code: ☐ Exc.

MKG. Action: ☐ Exc.

Stock values ☒ SELLING PRICE ☐ Purch. price ☐ Rotation

☐ No calculator ☐ On the period ☒ End of month September 2011 ☐ Average / Profitability

Amount of days in: ☐ Original doc. ☐ Entry date ☐ Vendor doc. ☐ Do not calculate the evolution

It is now possible to carry out a multi-supplier search

Vendor Code	Descr.	Unit
BREI	BREITLING	
CART	CARTIER	
CHAU	CHAUMET	
DINH	dinh van	
GOLD	GOLD DEALER	
ROLX	ROLEX	
SWAR	SWAROVSKI	

Detail

In order to optimise the process time, it is not necessary to calculate the stock values

Determine the calculation mode for the number of days in stock (valid for the average age of stock and profitability – see below)

Stock values ☒ SELLING PRICE ☐ Purch. price ☐ Rotation

☐ No calculator ☐ On the period ☒ End of month September 2011 ☐ Average / Profitability

Amount of days in: ☐ Original doc. ☐ Entry date ☐ Vendor doc. ☐ Do not calculate the evolution

Vend. cons. in stock ☒ Incl. ☐ Exc. ☐ Only Store cons. in stock ☒ Incl. ☐ Exc. ☐ Only

Vend. cons. sold ☒ Incl. ☐ Exc. ☐ Only Store cons. sold ☒ Incl. ☐ Exc. ☐ Only

Export ☒ Incl. ☐ Exc. ☐ Only Gifts ☒ Incl. ☐ Exc.

Export NET ☒ Incl. ☐ Exc. ☐ Only Editing option ☒ GROSS ☐ NET

Ventes ☒ Incl. ☐ Exc. ☐ Only

Codes

Statistics code: ☐ Exc.

Track. code: ☐ Exc.

Style code: ☐ Exc.

Stat. code: ☐ Exc.

MKG. Action: ☐ Exc.

Print-outs

☒ Rotation

☐ Average / Profitability

☐ Do not calculate the evolution

It is possible to choose the ratios to display, rotation (rate and month) or average number of stock and profitability

Profitability =

Gross margin excl. VAT (excl. distribution)

-----* 100
Average stock purchasing price excl. VAT (excl. loans)

Average stock = Average end of month



Remarks on vendor groups, analytical code and multiple selections

Vendor groups

From the MISCELLANEOUS menu - "Base Files" - "Vendor groups", it is possible to create supplier groups in order to select them more quickly (stock reports, statistics etc).

In the supplier file, you can allocate the desired group code: the supplier will then be part of a group.

Analytical code

The analytical code is an easy way of grouping together products (categories) which would not follow in the family classification (example: group together family 110 with family 320).

From the MISCELLANEOUS menu - "Base Files" - "Category nomenclature", it is possible to assign an analytical code

- either by modifying a category (category by category)
- or by automatic update (F8)

Multiple Selections:

A new application in ODEIS, it is now possible to make multiple selections from one search criteria.

For example, select supplier XXXX and YYYY

Select monitoring codes AA and BB

Select all EXCEPT the statistic code ZZ

Within the different functions of ODEIS, when the following table (in the top right corner of the screen) appears in the selection area, you can make multiple selections for these criteria.

Vendor		
Code	Descr.	Grp
BREI	BREITLING	
CART	CARTIER	
CHAU	CHAUMET	
DINH	dinh van	
GOLD	GOLD DEALER	
ROLX	ROLEX	
SWAR	SWAROVSKI	



4) - Print result (and calculation mode)

Distribution (in %) of
the value in
comparison with the
total selection

Change (in %) of the value in
comparison with the same
period last year

Change (in %) of the mark-up
value in comparison with the
same period last year

Turnover incl. VAT for the period
Average stock for the period

Per on period			Amount of sales			Margins			Aver. price GROSS				Stock at end 09/2011				Rotation			%
\$	Distr.	Evol.	Qty	Distr.	Evol.	Value NET	Rate	Distr.	Evol.	Sales	Evol.	Stock	Evol.	\$ P.	Distr.	Evol.	Qty	Ra	Month	gram
52	40,6		32	35,6		134 805	39,6	31,4		12 561		7 570		98 405	53,4		13	4,3	3	3,8
03	28,2		24	26,7		107 763	48,6	25,1		11 629		2 035		85 490	46,4		42	2,6	8	3,1
00	16,8		6	6,7		116 972	52,4	27,2		27 767								4,8	8	2,3
01	13,3		17	18,9		60 674	55,3	14,1		7 711								4,5	8	2,0
05	0,0		7	7,8		136	40,7	0,0		56								3,3	4	4,3
09			3	3,3		25	100,0	0,0		10		10		70			7	0,7	17	3,3
00	1,0		1	1,1		9 259	100,0	2,2		10 000		155		465	0,3		3	72,4	0	
09	100		90	100		429 634	51,3	100		10 991		2 837		184 430	100		65	3,7	3	3,1

Turnover excl. VAT – Purchasing price
excl. VAT accumulated total of sales
Turnover excl. VAT

Value of stock incl. VAT
Number of articles in stock

(At the end of the month or average for
the period, according to the selection)

Turnover incl. VAT for the
period
Number of sales

Number of months selected
Rotation rate

(The rotation month corresponds to the number of
months required to sell the stock, by referring to
the sales period)



PRICE RANGE ANALYSIS

The analysis by price range can be found in the menu:
Statistics - "Analysis by ranges" - "Analysis by price ranges"

1) - Function

Analyse the position of store sales in terms of retail price.

2) - Preview screen

The screenshot shows the 'Analysis by price range' window. The title bar reads 'Analysis by price range'. The menu bar includes 'Esc - Close', 'F2 - OK', 'Alt+I - Print', 'Alt+E - Excel export', 'Alt+M-Rem.', and the ODEIS logo. The main area is titled 'Analysis by price ranges' and contains several sections:

- Selection**:
 - Analysis: ☒ Section, ☐ Sub-section, ☐ Category
 - ☒ GROSS, ☐ NET
 - Sale from: 01/01/2011 to 13/09/2011 Store: []
 - Categ.: 100 to [] ACO
 - Vendor: [] ☐ Exc. []
 - Track code: [] ☐ Exc. []
 - Style code: [] ☐ Exc. []
 - Stat Code: [] ☐ Exc. []
 - Metal colour: [] ☐ Exc. []
- Vendor consignment**:
 - In stock: ☒ Incl. ☐ Exc.
 - Sold: ☒ Incl. ☐ Exc.
- Consigned by a store**:
 - In stock: ☒ Incl. ☐ Exc.
 - Sold: ☒ Incl. ☐ Exc.
- Editing option**:
 - ☐ Direct editing ☐ Editing preview
 - ☐ Edit : Selection total
- Other selections**:
 - Price range: ☒ General ☐ Of section
 - Currency: ☒ € ☐ £
 - Gifts: ☒ Incl. ☐ Exc.
 - ☐ All categories



3) - Selection screen

Indicate the analysis period

Selection

Analysis: ☒ Section ☐ Sub-section ☐ Category
☒ GROSS ☐ NET

Sale from: 01/01/2011 to 13/09/2011 store: []

Categ.: 100 to [] ACO

Vendor: [] Excl. []

Track. code: [] Excl. []

Style code: [] Excl. []

Stat Code: [] Excl. []

Metal colour: [] Excl. []

Vendor consignment	Consigned by a store
In stock: <input checked="" type="radio"/> Incl. <input type="radio"/> Excl.	In stock: <input checked="" type="radio"/> Incl. <input type="radio"/> Excl.
Sold: <input checked="" type="radio"/> Incl. <input type="radio"/> Excl.	Sold: <input checked="" type="radio"/> Incl. <input type="radio"/> Excl.

Other selections

Price range: ☒ General ☐ Of section

Currency: ☒ € ☐ £

Gifts: ☒ Incl. ☐ Excl.

☐ All categories

Editing option

☐ Direct editing ☐ Editing preview

☐ Edit : Selection total

General: calculation of values according to the general price range

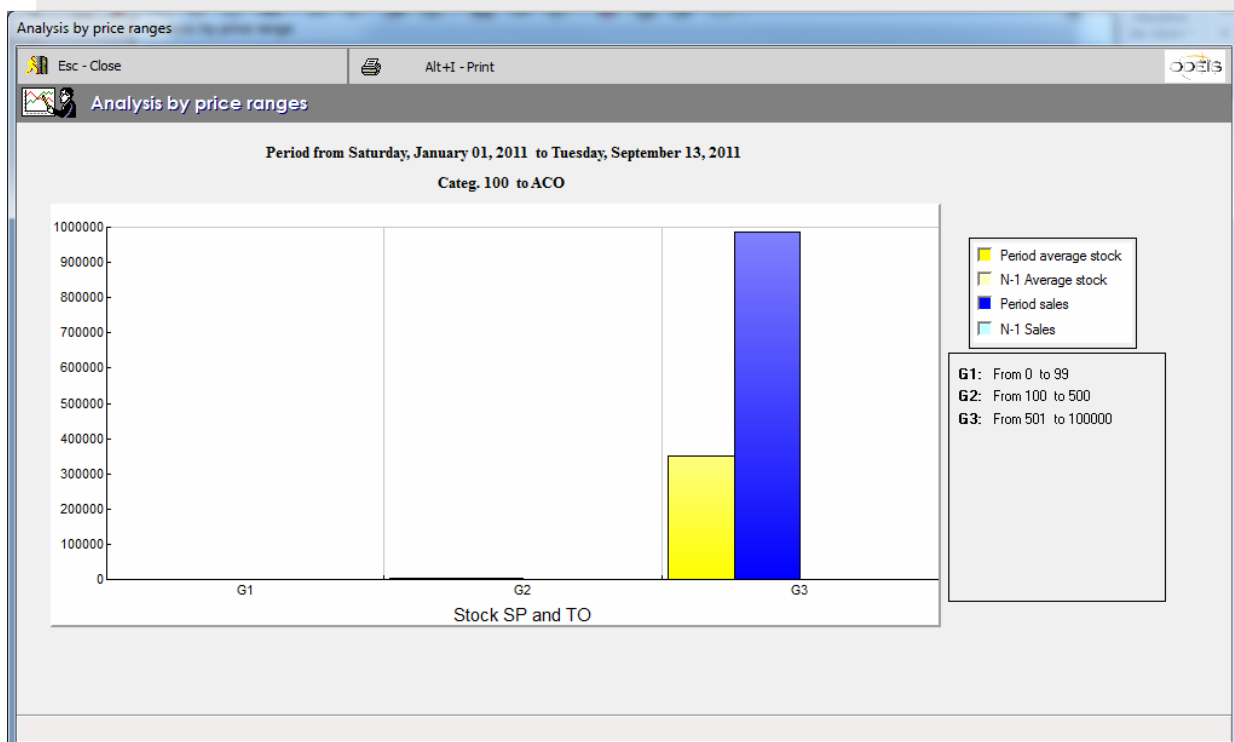
For the product line: Calculation of values according to the product line price range



4) - Screen results (and calculation mode)

		Total	From 0 to 99	From 100 to 500	From 501 to 100000	
Stock Qty	09/11	65	8	3	54	
	Period	58	9			Number of articles in stock for the month
	N-1					Number of articles in stock for the same period from the previous year
Stock Movt	09/11					
	Period	236	29			Quantity entered in stock for the month
	N-1					Quantity entered in stock for the same period from the previous year
Sales	09/11	1,0			1,0	
	Period	91,8	13,8			Number of sales for the month
	N-1					Number of sales for the same period from the previous year
Stock Cost	09/11	57 023	39	534	56 450	
	Period	169 354	118			Stock value excl. VAT at month end
	N-1					Average stock excl. VAT for the same period from the previous year
T.O NET	09/11	1 000			1 000	
	Period	838 958	502			Turnover excl. VAT for the month
	N-1					Turnover excl. VAT for the same period from the previous year
Stock SP	09/11	184 430	109			
	Period	353 891	237			Retail price Average stock incl. VAT for the month
	N-1					Retail price Average stock incl. VAT for the same period from the
T.O GROSS	09/11	1 148				
	Period	990 179	595			Turnover incl. VAT for the month
	N-1					Turnover incl. VAT for the same period from the previous year

5) - Graph





SUMMARY TABLE BY PRICE RANGES

The analysis by price range can be found in the menu:

Statistics - under menu "Analysis by ranges" - option "Summary table by price ranges"

1) - Function

Analyse the position of store sales over the last 12 months.

2) - Preview screen

Analysis by price range

Esc - Close F2 - OK Alt+M - Remember

Analysis by Price Ranges

c_selection

Analysis: ☒ Section ☐ Category
☐ Sub-section ☐ Vendor
☒ GROSS ☐ NET

Sale from: 01/01/2011 to 17/10/2011 Store:

Categ.: to 097

Vendor: ☐ Exc.

Track. code: ☐ Exc.

Style code: ☐ Exc.

Stat Code: ☐ Exc.

Metal colour: ☐ Exc.

Vendor consignment	Consigned by a store
In stock: <input checked="" type="radio"/> Incl. <input type="radio"/> Exc.	In stock: <input checked="" type="radio"/> Incl. <input type="radio"/> Exc.
Sold: <input checked="" type="radio"/> Incl. <input type="radio"/> Exc.	Sold: <input checked="" type="radio"/> Incl. <input type="radio"/> Exc.

Other selections

Price range: ☒ General ☐ Of section

Currency: ☒ £ ☐ €

Gifts: ☒ Incl. ☐ Exc.

☐ All categories

Editing option

☐ Direct editing
☐ Editing preview



3) -Selection screen

Indicate the analysis period

c_selection	
Analysis	<input checked="" type="radio"/> Section <input type="radio"/> Category <input type="radio"/> Sub-section <input type="radio"/> Vendor
	<input checked="" type="radio"/> GROSS <input type="radio"/> NET
Sale from	01/01/2011 to 17/10/2011 Store
Categ.	to 097
Vendor	<input type="checkbox"/> Exc.
Track. code	<input type="checkbox"/> Exc.
Style code	<input type="checkbox"/> Exc.
Stat Code	<input type="checkbox"/> Exc.
Metal colour	<input type="checkbox"/> Exc.

Vendor consignment	Consigned by a store
In stock : <input checked="" type="radio"/> Incl. <input type="radio"/> Exc.	In stock : <input checked="" type="radio"/> Incl. <input type="radio"/> Exc.
Sold : <input checked="" type="radio"/> Incl. <input type="radio"/> Exc.	Sold : <input checked="" type="radio"/> Incl. <input type="radio"/> Exc.

Other selections	
Price range :	<input checked="" type="radio"/> General <input type="radio"/> Of section
Currency :	<input checked="" type="radio"/> € <input type="radio"/> £
Gifts :	<input checked="" type="radio"/> Incl. <input type="radio"/> Exc.

Editing option	
<input type="checkbox"/> Direct editing	
<input type="checkbox"/> Editing preview	

General: calculation of values according to the general price range

Of section: calculation of values according to the product line price range



4) - Screen results (and calculation mode)

Number of sales for the month by range

Code	10 10	11 10	12 10	01 11	02 11	03 11	04 11	05 11	06 11	07 11	08 11	09 11	10 11	Sales Per.	St. Qty 10/2011	T.O. Period	Stock SP 10/2011
0				7	5	1	7			2	8	21	4	55	117	471 549	57 644
Total				7	5	1	7			2	8	21	4	55	117	471 549	57 644

Price range	10 10	11 10	12 10	01 11	02 11	03 11	04 11	05 11	06 11	07 11	08 11	09 11	10 11	Sales Per.	St. Qty 10/2011	T.O. Period	Stock SP 10/2011
0 à 99				1			1				4	12	1	19	112	662	2 800
100 à 500					1		1				1	2	1	6		1 468	
501 à 100000				6	4	1	5			2	3	7	2	30	5	469 419	54 844

Stock value for the range at month end

Detail of price ranges for the product line (or sub product line, family or supplier) selected



MONTHLY RECAP

The monthly summary can be found in the menu:
Statistics - "Monthly recap"

1) - Function

Compare (period N with N-1) the quantities in stock and sales by price range

2) - Preview screen

Analysis by consolidated price range

Esc - Close F2 - OK Alt+M - Remember

Analysis store price Recapitulative

Period
Analysis: ☒ Section ☐ Sub-section ☐ Category
☒ On the period ☐ At end October 2011
Period from: 01/01/2011 to: 17/10/2011

Selections
Categ. to 097
Vendor ☐ Exc. ☐
Track. code ☐ Exc. ☐
Style code ☐ Exc. ☐
Stat Code ☐ Exc. ☐
Metal colour ☐ Exc. ☐

Other selections
Currency: ☐ ☐ ☐
Price range: ☒ General ☐ Of section ☐ GROS
Gifts: ☒ Incl. ☐ Exc. ☐ NET
☐ All categories
Store cons. in stock: ☒ Incl. ☐ Exc.
Sold store cons.: ☒ Incl. ☐ Exc.
Vendor cons. in stock: ☒ Incl. ☐ Exc.
Sold vendor cons.: ☒ Incl. ☐ Exc.

Editing options
☐ Printing preview

Stores

007	DINH VAN - PAIX	<input checked="" type="checkbox"/>
-----	-----------------	-------------------------------------

dinh van JOAILLIER



3) - Selection screen

Period

Analysis ☒ Section ☐ Sub-section ☐ Category

☒ On the period ☐ At end October 2011

Period from 01/01/2011 to 17/10/2011

Selections

Categ. to 097

Vendor ☐ Exc.

Track. code ☐ Exc.

Style code ☐ Exc.

Stat Code ☐ Exc.

Metal colour ☐ Exc.

Other selections

Currency: ☒ General ☐ Of section ☐ NET

Price range: ☒ Incl. ☐ Exc.

Gifts: ☒ All categories

Store cons. in stock: ☒ Incl. ☐ Exc.

Sold store cons.: ☒ Incl. ☐ Exc.

Vendor cons. in stock: ☒ Incl. ☐ Exc.

Sold vendor cons.: ☒ Incl. ☐ Exc.

Editing options

☐ Printing preview

Choose the type of analysis

Indicate your selection criteria

General: calculation of values according to the general price range

For the product line: calculation of values according to the product line price range

Display of different values

Quantities in stock and sales

DINH VAN - PAIX
RUE DE LA PAIX
75002 PARIS
Tél 01 42 61 74 49
R.C.

Simplified analysis by price range -Recap.-

Store 007 DINH VAN - PAIX

Date 17/10/11
Page 1

Period N-1	01/01/2010 to 17/10/2010	Period N	01/01/2011 to 17/10/2011	Stock over the period -TTC- Sales from 01/01/2011 to 17/10/2011	Categ 001 to categ 097	Vendor(s) All
------------	--------------------------	----------	--------------------------	--	------------------------	---------------

Rayons	%Rép.	Amount Sale	%Evo.	SP Aver.	%Mar.	Qty(s)	From 0 to 99	From 100 to 500	From 501 to 100000	From 100 to 200 000	From 100 to 200 000	From 100 to 200 000	From 100 to 200 000	From 100 to 200 000	From 100 to 200 000
0 SERVICE S / OUT OF STOCK							112		5						
2010 Stock															
2010 Sales															
2011 Stock							30	23	1	6					
2011 Sales							55	19	6	30					
STORE GRAND TOTAL 007							117	112	5						
2010 Stock															
2010 Sales															
2011 Stock							30	23	1	6					
2011 Sales							55	19	6	30					



REFERENCE ANALYSIS

The reference analysis can be found in the menu:
Statistics - "Reference Analysis"

1) - Function

Analyse the life of a supplier reference over the last 12 months.

2) - Preview screen

Item managt

Esc - Close F2 - OK F3 - Cancel F6 - Other page Alt+I - Print

Reference Analysis

Selections

Categ. 001 to 097 Sto.

Vendor code Exc.

Vend. ref.

Track. code Exc.

Style code Exc.

Stat Code Exc.

Metal colour Exc.

Stat. code Exc.

Selling price 0,00 to 99 999 999,99

Size from 0 to 999

Other selections

Trans. date from 17/10/2010 to 17/10/2011

Sales during period 1,0 to 9 999,0

Qty in stock from 0,0 to 9 999,0

☒ To add the not sold references

Qty in stock from 0,0 to 9 999,0

Date of last purch. from 01/01/1980 to 17/10/2011

Days in stock from 0 to 99 999

Reord. qty from : ☒ Ignored ☐ Less ☐ Less or equal

Reord. qty from 0,0 to 9 999,0

Sold store cons. : ☒ Incl. ☐ Exc. ☐ Only

Store cons. in stock : ☒ Incl. ☐ Exc. ☐ Only

Sold vendor cons. : ☒ Incl. ☐ Exc. ☐ Only

Vendor cons. in stock : ☒ Incl. ☐ Exc. ☐ Only

☐ All references

Number of days in stock : ☒ Origin doc. date
☐ Entry date
☐ Vendor doc. date

Export sales : ☒ Incl. ☐ Exc. ☐ Only

Price range : ☒ General ☐ Of section

Gifts : ☒ Incl. ☐ Exc.

Categ.	Code	Descr.	
001		MENOTTES -	<input checked="" type="checkbox"/>
010		MENOTTES -	<input type="checkbox"/>
011		ALLIANCE OR ET OR+DIAS -	<input type="checkbox"/>
012		MENOTTES ACIER -	<input type="checkbox"/>
019		SOLITAIRE ET MONTURE SOL. -	<input type="checkbox"/>
020		BAGUES OR -	<input type="checkbox"/>
021		BAGUES ARGENT -	<input type="checkbox"/>
022		BAGUES OR+DIAS -	<input type="checkbox"/>
030		BRACELET OR+DIAS -	<input type="checkbox"/>
033		BSC ARGENT -	<input type="checkbox"/>
034		BSC OR ET OR+DIAS -	<input type="checkbox"/>
040		COLL. ET CHAINES OR -	<input type="checkbox"/>
041		COLL. ET CHAINES OR+DIAS -	<input type="checkbox"/>

Editing options

☐ Direct editing ☐ Editing preview



3) - Selection screen

Size management

Add the selection of articles not sold in the period

Minimum number of sales from which the reference will be selected

Display of contextual help

Tick this box to select all the references which have existed before in Odeïs

Indicate the calculation mode for the number of days in stock

Management of stock warning

Selections

Categ. 001 to 097 Sto.

Vendor code ☐ Exc.

Vend. ref.

Track. code ☐ Exc.

Style code ☐ Exc.

Stat Code ☐ Exc.

Metal colour ☐ Exc.

Stat. code ☐ Exc.

Selling price 0,00 to 99 999 999,99

Size from 0 to 999

Other selections

Trans. date from 17/10/2010 to 17/10/2011

Sales during period 1,0 to 9 999,0

Qty in stock from 0,0 to 9 999,0

☒ To add the not sold references

Qty in stock from 0,0 to 9 999,0

Date of last purch. from 01/01/1980 to 17/10/2011

Days in stock from 0 to 99 999

Reord. qty from : ☒ Ignored ☐ Less ☐ Less or equal

Reord. qty from 0,0 to 9 999,0

Sold store cons. : ☒ Incl. ☐ Exc. ☐ Only

Store cons. in stock : ☒ Incl. ☐ Exc. ☐ Only

Sold vendor cons. : ☒ Incl. ☐ Exc. ☐ Only

Vendor cons. in stock : ☒ Incl. ☐ Exc. ☐ Only

☐ All references

Number of days in stock : ☒ Origin doc. date ☐ Entry date ☐ Vendor doc. date

Export sales : ☒ Incl. ☐ Exc. ☐ Only

Price range : ☒ General ☐ Of section

Gifts : ☒ Incl. ☐ Exc.

Editing options

☐ Direct editing ☐ Editing preview

Categ.	Code	Descr.	
001		MENOTTES -	<input checked="" type="checkbox"/>
010		MENOTTES -	<input type="checkbox"/>
011		ALLIANCE OR ET OR+DIAS -	<input type="checkbox"/>
012		MENOTTES ACIER -	<input type="checkbox"/>
019		SOLITAIRE ET MONTURE SOL -	<input type="checkbox"/>
020		BAGUES OR -	<input type="checkbox"/>
021		BAGUES ARGENT -	<input type="checkbox"/>
022		BAGUES OR+DIAS -	<input type="checkbox"/>
030		BRACELET OR+DIAS -	<input type="checkbox"/>
033		BSC ARGENT -	<input type="checkbox"/>
034		BSC OR ET OR+DIAS -	<input type="checkbox"/>
040		COLL. ET CHAINES OR -	<input type="checkbox"/>
041		COLL. ET CHAINES OR+DIAS -	<input type="checkbox"/>



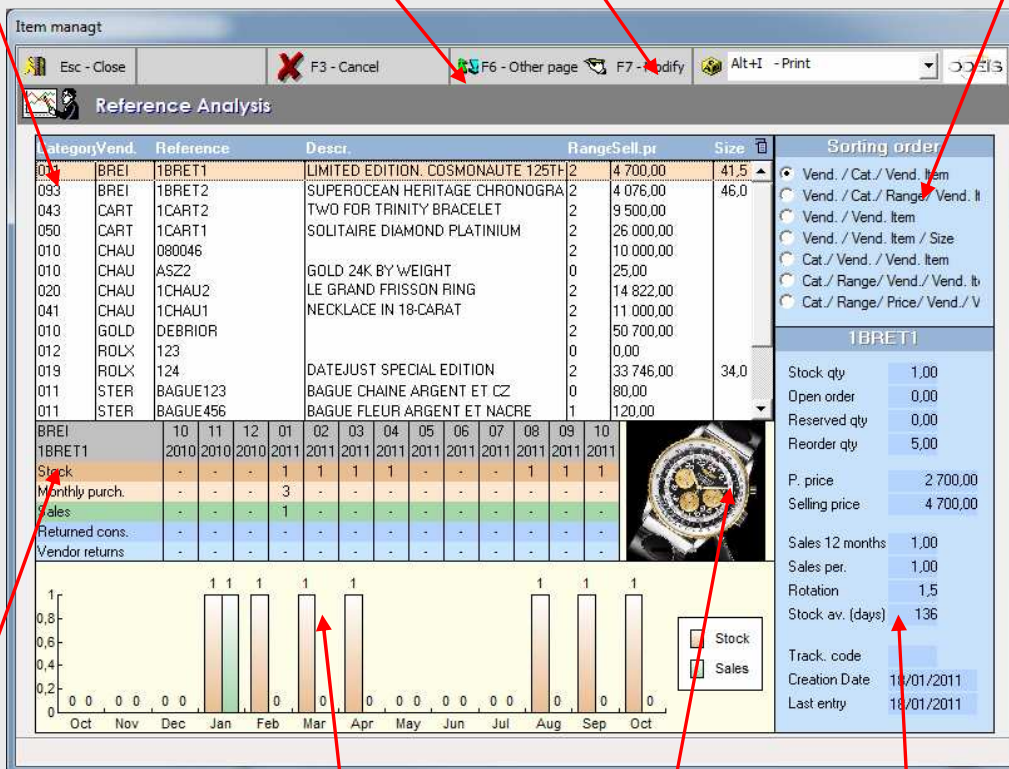
4) - Screen results

Return to the selection screen without losing the results in progress

This function modifies the monitoring code and stock warning for all the articles having the same selected supplier reference

The table on the left as well as the print-out will be displayed according to the order of presentation

List of references selected



Product history over the last 12 months

Graph of stock and sales for the selected reference

Product photo

Product information

BEST SELLERS

The best selling references can be found in the menu:
Statistics - "Best sellers"

1) - Function

Know the best-selling supplier references (by number of sales and turnover).

2) - Screen preview and selection

[illegible]



Info General Detail Codifications Edit

General

Situation / ☒ By vendor reference
☐ By label number

Sale from to

Categ. to

Vend. code ☐ Exc.

Total by ☒ Cat, Vd, Vd ref. ☐ Vd, Vd. ref

Period for analysis and main selection criteria

Info General Detail Codifications Edit

Options

Quantity in stock from to

Selling price to

Amount of sales from to

Turnover to

Days in stock to

on ☒ Original doc. date ☐ Entry date ☐ Vendor doc. date

Additional selection criteria

Info General Detail Codifications Edit

Codifications

Track. code ☐ Exc.

Style code ☐ Exc.

Stat Code ☐ Exc.

Metal colour ☐ Exc.

Selection of monitoring, statistic and style codes

Info General Detail Codifications Edit

Editing options

☐ Editing preview ☐ Direct editing

☐ Detail of labels ☐ Qty Stock > 0

Printing options



3) - Screen results

Print-out of results

For each reference selected, the photo is displayed

References best sellers

Esc - Close F2 - OK F3 - Cancel Alt+I - Print

References best sellers

General Detail Codifications Edit

General

Situation: 10 / 2011 By vendor reference
 Sale from: 01/11/2010 to 31/10/2011 By label number
 Categ.: to 097
 Vend. code: Ex.
 Total by: Cat., Vd., Vd.ref. Vd., Vd.ref.

Sorted by

☐ Fam / Vend. / Reference ☒ Amount of sales
☐ Vend. / Fam / Reference ☐ Turnover
☐ Vend. / Reference / Fam

Cat.	Vendor		Tr	Label #	Stock Qty	P.P. B.T.	Sell. price	Days			Sles	Discount	T.O GROSS
	Code	Reference						Stock	Sale	Aver.			
010	CHAU	ASZ2			112		25	20		18	11		275
050	CART	1CART1				14 000	26 000		56	56	11	8 820	250 180
015							0		160	160	5	5	245
012	ROLX	123				3 000	4 600		-73	-73	4	600	17 800
033	SWAR	1SWAR3				33	59		149	149	3	15	162
010	SWAR	1SWAR1				200	345		-61	-61	3		1 035
019	ROLX	124				20 000	33 746		159	159	3	3 746	97 492
041	CHAU	1CHAU1			1	6 000	11 000	13	28	24	3		33 000
093	BREI	1BRET2				2 100	4 076		167	167	3		11 781
020	CHAU	1CHAU2			2	7 500	14 822	272	40	132	2	1 482	25 466
043	CART	1CART2			1	5 000	9 500	272	45	120	2		19 000



4) - Results (and calculation mode)

Stock file price of the last article entered in stock

Average stock days of articles present in stock

Average stock days of articles sold

	Qty	Qty	Last	Last	Days	Aver. period	Sales	Discounts		T.O GROSS	Sales	
	Ord.	Stk	P.P NET	SELLING	In stock	Bef sale	of stock	Period	Value	%	Period	P.P NET
		112		25	20		18	11			275	
			14 000	26 000		56	56	11	8 820	3,41	250 180	154 000
						161	161	5	5	2,00	245	33 141
	4		3 000	4 600		-74	-74	4	600	3,26	17 800	12 000
			33	59		149	149	3	15	8,42	162	99
			200	345		-61	-61	3			1 035	600
	3		20 000	33 746		159	159	3	3 746	3,70	97 492	60 000
		1	6 000	11 000	13	28	25	3			33 000	18 000
RA			2 100	4 076		167	167	3				100
		2	7 500	14 822	272	40	133	2	1 48			100
		1	5 000	9 500	272	45	121	2			19 000	10 000
			108	237		247	247	1	24	10,13	213	108
				120		1	1	1			120	
				80		1	1	1			80	
				10 000		1	1	1			10 000	
ST		1	2 700	4 700	272		136	1			4 700	2 700
	7	117	28 700	57 644				55	14 692	3,02	471 549	311 948

Average stock days of articles (stock and sold)

5) - Print-out results in catalogue format

Picture	Vendor ref.	Category descr.	Stock	Purchpr.	Creation d.	Rd.	Size	Serial number	Form.ref
	Cat. Label#	Supplm. description	S.per	Selling price	last entry	Ord.	Metal		
	TO	Style Trac Stat.	S.Ori	Margin NET	Days stock	Res.	Stone 1		
	-				18/01/11				
	015 007.4		5						
	245		5		160				
	BREI - 1BRE T1	alliance or et or+dias	1	2 700	18/01/11	5		D22322	D22322
	011 007.10	limited edition. cosmonaute 125th annive	1	4 700	14/01/11				
	4 700	breit	1	31,3%	136				
	BREI - 1BRE T2	montres jdv		2 100	18/01/11	5		A13320Q4	A13320Q4
	093 007.11	superocan heritage chronographe black	3	4 076	17/01/11		10,00 gr		
	11 781	breit	3	38,4%	167				
	CART - 1CART 2	colliers perles	1	5 000	18/01/11	5		HP600407	HP600407
	043 007.7	two for trinity bracelet	2	9 500	14/01/11		750/1000 OR BLANC		
	19 000	carti	2	37,1%	120		DIAMOND		



AGED STOCK LIST

The aged stock list can be found in the menu:
Statistics - "Aged stock list"

1) - Function

List vendor references according to their time in stock

2) - Screen preview and selection

Aged stock list

Esc - Close F2 - OK F3 - Cancel Alt+I - Print

Aged stock list

General Detail Codifications Edit

General

Situation: 10 / 2011 ☒ By vendor reference ☐ By label number

Categ.: to 097

Vend. code: ☐ Exc.

Total by: ☒ Cat, Vd, Vd ref. ☐ Vd, Vd. ref

Sorted by

☒ Fam / Vend. / Reference ☐ Former items
☐ Vend. / Fam / Reference ☐ New items
☐ Vend. / Reference / Fam

Cat.	Vendor		Tr	Label #	Stock Qty	P.P. B.T.	Sell. price	Days			Sles	Discount	T.O GROS
	Code	Reference						Stock	Sale	Aver.			



General | Detail | Codifications | Edit

General

Situation / ☒ By vendor reference ☐ By label number

Categ. to

Vend. code ☐ Exc.

Total by ☒ Cat, Vd, Vd ref. ☐ Vd, Vd. ref

Main selection criteria

General | Detail | Codifications | Edit

Options

Quantity in stock from to

Selling price to

Days in stock to

on ☒ Original doc. date ☐ Entry date ☐ Vendor doc. date

Additional selection criteria

General | Detail | Codifications | Edit

Codifications

Track. code ☐ Exc.

Style code ☐ Exc.

Stat Code ☐ Exc.

Metal colour ☐ Exc.

Selection of monitoring, statistic and style codes

General | Detail | Codifications | Edit

Editing options

☐ Editing preview ☐ Direct editing

☐ Detail of labels ☐ Qty Stock > 0

Printing options

Sorted by

☒ Fam / Vend. / Reference ☐ Former items

☐ Vend. / Fam / Reference ☐ New items

☐ Vend. / Reference / Fam

Sorting options



3) - Screen results

Print-out of results

For each reference selected, the photo is displayed

Aged stock list

Esc - Close F2 - OK F3 - Cancel Alt+I - Print

Aged stock list

General

Situation: 10 / 2011 By vendor reference By label number

Categ: 10 097

Vend. code: Exp.

Total by: Cat, Vd, Vd ref Vd, Vd ref

Sorted by

☒ Fam / Vend. / Reference ☐ Former items

☐ Vend. / Fam / Reference ☐ New items

☐ Vend. / Reference / Fam

Cat.	Vendor		Tr	Label #	Stock Qty	P.P. B.T.	Sell. price	Days			Sles	Discount	T.O GROSS
	Code	Reference						Stock	Sale	Aver.			
010	CHAU	080046					10 000		1	1			10 000
010	CHAU	ASZ2			112		25	20	18	11			275
010	SWAR	1SWAR1				200	345		-61	-61	3		1 035
011	BREI	1BRET1			1	2 700	4 700	272	136	1			4 700
011	STER	BAGUE123					80		1	1	1		80
011	STER	BAGUE456					120		1	1	1		120
012	ROLX	123				3 000	4 600		-73	-73	4	600	17 800
015							0		160	160	5	5	245
019	ROLX	124				20 000	33 746		159	159	3	3 746	97 492
020	CHAU	1CHAU2			2	7 500	14 822	272	40	132	2	1 482	25 466
022	SWAR	1SWAR2				108	237		247	247	1	24	213

4) - Print result (and calculation mode)

Stock file price of the last article entered in stock

Average stock days of articles present in stock





Average stock days of articles sold

Qty	Qty	Last	Last	Days	Aver. period	Sales	Discounts	T.O GROSS	Sales
Ord.	Stk	PP NET	SELLING	In stock	Bef sale	of stock	Value	%	Period
		10 000	10 000	1	1	1			10 000
	112	25	25	20	18	11			275
		200	345		-61	-61			1 035
ST	1	2 700	4 700	272	136	1			4 700
		80	80		1	1			80
		120	120		1	1			120
4		3 000	4 600		-74	-74	4	600	17 800
					161	161	5	5	245
3		20 000	33 746		159	159	3	3 746	97 492
	2	7 500	14 822	272	40	133	2	1 482	25 466
		108	237		247	247	1	24	213
		33	59		149	149	3	15	162
	1	6 000	11 000	13	28	25	3		18 000
	1	5 000	9 500	272	45	121	2		10 000
		14 000	26 000		56	56	11		154 000

Average stock days of articles (stock and sold)



5) - Print-out results in catalogue format

Picture	Vendor ref.		Category descr.			Stock	Purchpr.	Creation d.	Rd.	Size	Serial number	Form.ref
	Cat.	Label#	Supplem. description			S.per	Selling price	last entry	Ord.	Metal		
	TO		Style	Trac	Stat.	S.Ori	Margin NET	Days stock	Res.	Stone 1		
	-							18/01/11				
	015	007.4				5						
	245					5		160				
	BREI - IBRE T1		alliance or et or+dias			1	2 700	18/01/11	5		D22322	D22322
	011	007.10	limited edition. cosmonaute 125th annive			1	4 700	14/01/11				
	4 700		breit			1	31,3%	136				
	BREI - IBRE T2		montres jdv				2 100	18/01/11	5		A13320Q4	A13320Q4
	093	007.11	superocean heritage chronographe black			3	4 076	17/01/11		10,00 gr		
	11 781		breit			3	38,4%	167				
	CART - 1CART1		pendentifs or				14 000	18/01/11	5			
	050	007.63	solitaire diamond platinum			11	26 000	16/09/11		900/1000		
	250 180		carti			11	35,6%	56	1	1 DIAMOND ROUND VS1 G		
	CART - 1CART2		colliers perles			1	5 000	18/01/11	5		HP600407	HP600407
	043	007.7	two for trinity bracelet			2	9 500	14/01/11		750/1000 OR BLANC		
	19 000		carti			2	37,1%	120		DIAMOND		

AGE PYRAMID

The age pyramid of stock can be found in the menu:
Statistics - "Age Pyramid" - "Stock age pyramid"

1) - Function

Value the quantity and price of articles present in stock by age range.

2) - Screen preview and selection

Possibility of editing the result:

- by totalling
- or by itemising (with a total by product line, sub-product line, family or supplier)

Period for analysis up to

Indicate the calculation mode for the number of days in stock

3) - Total Result Print-out

Age bracket	Purch.price value	Distr.%	Selling price value	Distr.%	Coef.	Metal weight	Distr.%	Quantity	Distr.
0 year(s)	28 700,00	100,00	57 644,00	100,00	2,01	24,00	100,00	117,00	100
TOTAL	28 700,00	100,00	57 644,00	100,00	2,01	24,00	100,00	117,00	100

4) - Detailed Result Print-out

Selection criteria		Categ. 000 to categ. 097 All vendors Cons. to other store Ind. Cons. by other store Ind.																		Ind. vendors consignments Stocking period 0 to 99 year(s) (Original doc. date)									
		Av. 2004		2004 (7 years)		2005 (6 years)		2006 (5 years)		2007 (4 years)		2008 (3 years)		2009 (2 years)		2010 (1 year)		2011											
RAY S		Value	Qty	Value	Qty	Value	Qty	Value	Qty	Value	Qty	Value	Qty	Value	Qty	Value	Qty	Value	Qty										
0	% mix																	100,0 %	100,0 %										
	Yearly stocks																	28 700	117										
	Cumul stocks																	28 700	117										
TOTAL RAYS																													
	% mix																	100,0 %	100,0 %										
	Yearly stocks																	28 700	117										
	Cumul stocks																	28 700	117										



SALES AGE PYRAMID

The age pyramid of sales can be found in the menu:
Statistics - "Age Pyramid" - "Sales age pyramid"

1) - Function:

Value the quantity and price of articles sold by age range.

2) - Screen preview and selection:

Period for analysis

Indicate the calculation mode for the number of days in stock

3) - Print-out of results

Age bracket	Purch. price value	Distr. %	Selling price value	Distr. %	Coef.	Quantity
0 mont	75 700,00	32,18	213 498,55	46,18	2,82	30,00
1 mont	62 200,00	26,44	107 461,00	23,24	1,73	5,00
3 mont	53 000,00	22,53	103 109,52	22,30	1,95	5,00
4 mont	-6 500,00	-2,76	-22 525,84	-4,87	3,47	0,00
6 mont	-2 067,00	-0,88	-3 946,90	-0,85	1,91	0,00
7 mont	24 200,00	10,29	41 746,00	9,03	1,73	3,00
8 mont	34 141,00	14,51	33 763,00	7,30	0,99	4,00
9 mont	-5 400,00	-2,30	-10 746,00	-2,32	1,99	0,00
TOTAL	235 274,00	100,00	462 359,33	100,00	2,39	47,00



SALESPERSONS ACTIVITY

Sales assistant activity can be found in the menu:
Statistics - "Salespersons Activity"

1) - Function

Analyse the sales of the assistants in terms of turnover, amount and average shopping basket.

2) - Screen preview and selection

Detailed: analysis of a sales assistant's code for a period
Totalled: analysis of all the sales assistants for a period

4) - Screen results (detailed)

Day	Day	T.O NET	TO	Sales	Cust	Distribution	Commissions
13	Saturday 13 August 2011	33 154,38	37 796,00	3	4	99.97	0,00
19	Friday 19 August 2011	0,00	0,00	0	1	0	0,00
29	Monday 29 August 2011	0,00	0,00	0	0	0	0,00
31	Wednesday 31 August 2011	302,63	345,00	2	2	22.33	0,00
09	Friday 9 September 2011	0,00	0,00	0	0	0	0,00
15	Thursday 15 September 20	3 846,15	4 600,00	1	1	100	0,00
20	Tuesday 20 September 201	24 665,54	29 500,00	2	2	101.18	0,00
22	Thursday 22 September 20	4 312,70	5 158,00	3	4	100	0,00
26	Monday 26 September 2011	25 083,60	30 000,00	1	1	100	0,00
27	Tuesday 27 September 201	21 780,93	26 050,00	2	3	100	0,00
04	Tuesday 4 October 2011	11 153,84	13 340,00	1	1	100	0,00
10	Monday 10 October 2011	3 408,03	4 076,00	1	1	100	0,00
13	Thursday 13 October 2011	167,22	200,00	2	2	100	0,00



5) -Screen Result (cumulative)

Vendeur AB: ANTHONY

Month	Sales	Cust.	T.O GROSS	T.O NET	Services TO	Aver.SP	Discounts		Purch. value	Margin N	Mix	Commissions
08/11	5	7	38 141	33 457	38 141	7 628	600	1.5%	23 250	30.5%	100%	0
09/11	9	11	95 308	79 689	95 308	10 590	3 779	3.8%	68 341	14.2%	100%	0
10/11	4	4	17 616	14 729	17 616	4 404	1 482	7.8%	9 600	34.8%	100%	0
Total	18	22	151 065	127 875	151 065	8 393	5 861	3.7%	101 191	20.9%	100%	0

Total des vendeurs

Month	Sales	Cust.	T.O GROSS	T.O NET	Services TO	Aver.SP	Discounts		Purch. value	Margin N	Mix	Commissions
08/11	5	7	38 141	33 457	38 141	7 628	600	1.5%	23 250	30.5%	100%	0
09/11	9	11	95 308	79 689	95 308	10 590	3 779	3.8%	68 341	14.2%	100%	0
10/11	4	4	17 616	14 729	17 616	4 404	1 482	7.8%	9 600	34.8%	100%	0
Total	18	22	151 065	127 875	151 065	8 393	5 861	3.7%	101 191	20.9%	100%	0



ACTIVITY SCHEDULE HOURLY ACTIVITY

Hourly activity can be found in the menu:
Statistics - "Hourly attendance" - "Hourly Activity"

1) - Function

View the turnover (or the number of clients) by hourly brackets for a day according to a sales period

2) - Screen preview and result

Period for analysis

HOURLY VISITS

Esc - Close F2 - OK F3 - Counting F6 - Graph Alt+I - Print

HOURLY VISITS : Hourly activity

Selection

Sales from: 01/01/2011 to 17/10/2011 By turnover By amt of cust.

Salesp. code

Schedules: 8 h - 22 h Monday Tuesday Wednesday Thursday Friday Saturday Sunday

Display T.O

Rounded Without round off

Time	T.O	Customer	Visits	Rate
<8h				
8h-9h	3 500	1		
9h-10h	215 506	13		
10h-11h	188 007	15		
11h-12h	13 687	2		
12h-13h	86 120	7		
13h-14h	36 000	2		
14h-15h	52 458	9		
15h-16h	25 414	6		
16h-17h	272 703	19		
17h-18h	145 494	8		
18h-19h	216	1		
19h-20h	43 340	2		
20h-21h				
21h-22h	33 900	1		
>22h	8 550	3		

Results of the selection



ACTIVITY SCHEDULE WEEKLY ACTIVITY

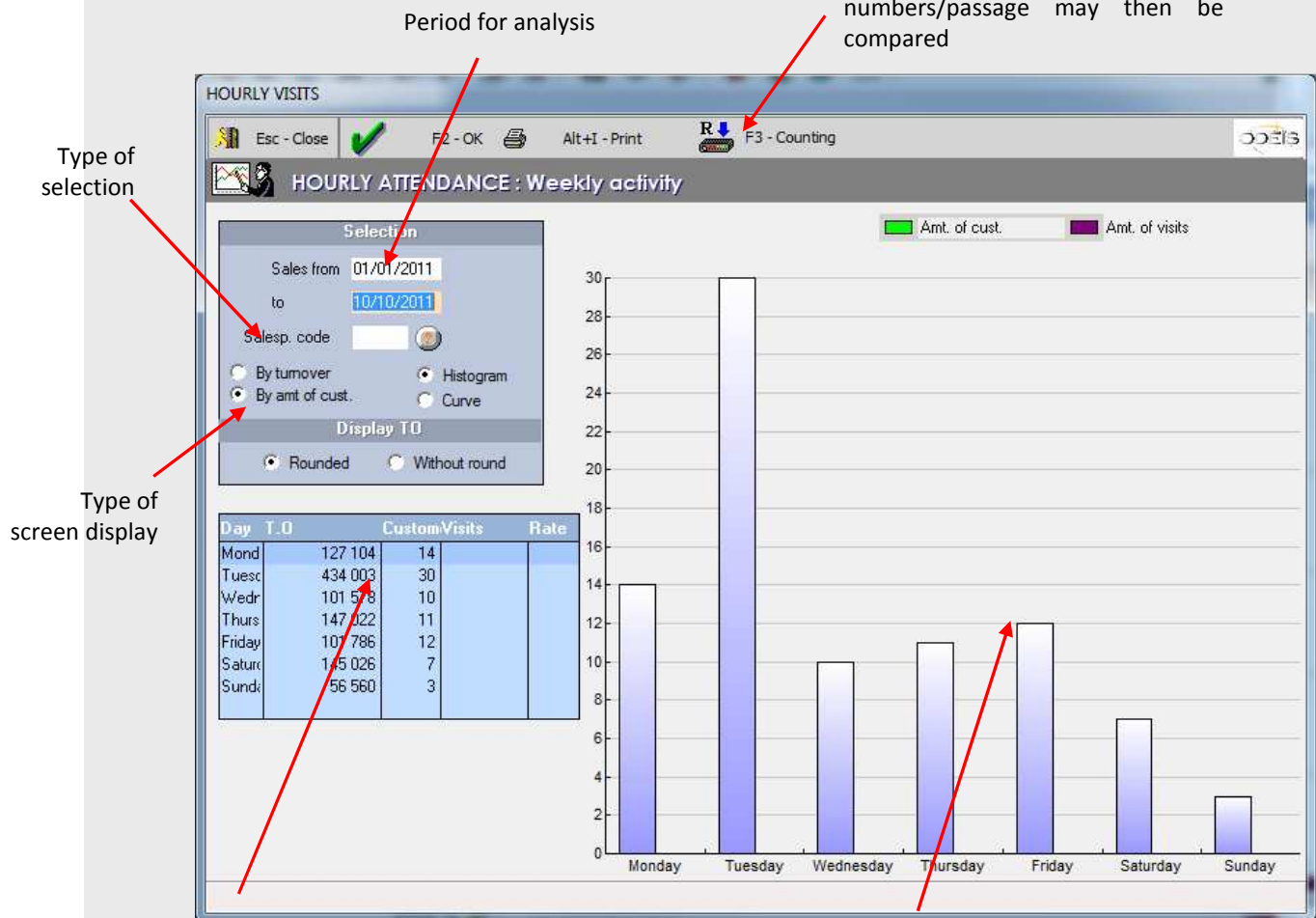
Hourly activity can be found in the menu:
Statistics - "Hourly attendance" - "Weekly Activity"

1) - Function

Compare the sales for each day over a week (by turnover or number of clients) according to a sales period.

2) - Screen preview and result

Allows for the cross-referencing of client counting with ODEIS.
In this case, the number of clients will appear and client numbers/passage may then be compared



Summary table

Results of the selection (histogram or line graph)

MODEL STOCK

Ideal stock can be found in the menu:
Statistics - "Model Stock"

1) - Function

Define the ideal stock by price range and product category

2) - Preview screen

Access to the ideal stock input

[illegible]

Ideal quantity in stock for the chosen range and family

Quantity of current stock and quantity sold for the chosen range and family



3) - Results print-out

Ideal stock

Current stock

Quantity sold

List of price ranges

Total of all ranges

Catego	From 0 to 99			From 100 to 5			From 501 to 1			Price range			Price range			Price range			Price range			Price range			Price range			Price range		
	Bas.	Sto.	Sale	Bas.	Sto.	Sale	Bas.	Sto.	Sale	Bas.	Sto.	Sale	Bas.	Sto.	Sale	Bas.	Sto.	Sale	Bas.	Sto.	Sale	Bas.	Sto.	Sale	Bas.	Sto.	Sale	Bas.	Sto.	Sale
001																														
010																														
011																														
012																														
019																														
020																														
021																														
022																														
030																														
033																														
034																														
040																														
041																														
042																														
043																														
050																														
051																														