



PRINTER SETTINGS

You need to configure the same number of printers for the number of label types used.

1) Configuration of the EasyCoder Driver PC4 / PF8T

Right-click on the printer, then *Properties*. Go to *Printing options*.

The image shows two screenshots of printer configuration windows. The top window is titled "C4 Options d'impression" and the bottom window is titled "EasyCoder PC4 (300 dpi) Options d'impression". Both windows have tabs for "Mise en page", "Graphiques", "Support", "Options", and "A propos de".

C4 Options d'impression:

- Support:** Nom: A (65,0 mm x 30,0 mm). Buttons: Nouveau..., Edition..., Supprimer...
- Aperçu:** Shows a preview of a label with "ABC" text.
- Orientation:** Portrait (selected), Paysage, Portrait 180°, Paysage 180°.
- Effets:** Image inversée, Négative.
- Mise en page prédéfinie:** Nom: <Paramètres actuels>. Button: Gérer...
- Options avancées...** button.
- Copyright: © 1999 Intermec Technologies Corporation. © 1997-2004 Seagull Scientific, Inc., Authors of the BarTender® label software.
- Buttons: OK, Annuler, Appliquer, Aide.

EasyCoder PC4 (300 dpi) Options d'impression:

- Paramètres du support:**
 - Méthode d'impr.: Transfert thermique.
 - Media Type: Etiquettes avec vides. Inverser capteur (checkbox).
 - Hauteur de vide: 3,5 mm. Décalage d'espace: 0,0 mm.
 - Hauteur repère: (empty field). Décalage de marque: (empty field).
 - Alimentation extra: (empty field).
- Mode d'alimentation:**
 - Mode: Déchirer.
 - Sauvegarde Haut de la feuille (checked). Réglage avance: 17,3 mm.
 - Cyl Position: (empty field). Intervalle de coupe: (empty field).
- Buttons: OK, Annuler, Appliquer, Aide.



Tab *Page layout* ☐ Click on *Generate* to create a new type.

For type **A** Width = 60mm and Height = 20mm
For types **B** and **C**: Width = 90mm and Height = 11mm
For type **D**: Width = 100mm and Height = 30mm
For type **U** Width = 100mm and Height = 39.6mm

Tab *Graph*

Resolution = 11.8 X 11.8
Dithering = Sequenced

Tab *Support*

Printing method = Thermal transfer
Media type = Labels with gaps
Height of space = 2.5mm for types **A, B, C, D** and 5mm for type **U**
Space offset = 0mm
Mode = To tear off
To tick *Save top of the page*
Adjustment of feed = 17.3cm (20cm is slower, but it allows the label to be peeled off)

Tab *Options*

Printing speed = 40.0 mm/s
Brightness = 6

All these operations are to be repeated in the tab *Advanced* and *Default printer*.

For the bar code: See the paragraph [3\) Configuring the bar code font](#)

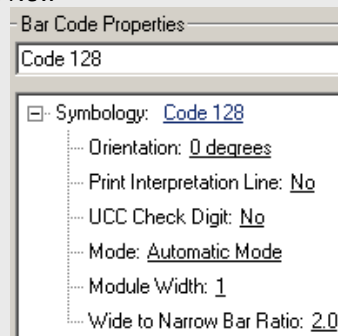
Pay attention to the legibility of the bar code: If need be, modify the *Brightness*

2) Configuring the bar code font

Z4M S4M ZM400 (Zebra Driver)

Printer properties, tab *Printer Bar code options, Settings*: To do *New*

Name: CB_ODEIS
Orientation = 0 degrees
Print interpretation line = No
UCC Check digit = No
Mode: Automatic mode
Module Width = 2
Wide to narrow Bar ration: 2.0



Important: The name of the bar code font in Odeis should be proceeded by "ZB" (ZB:CB_ODEIS)
On a ZM400 the size of the printed bar code is 16mm.



Intermec PC4 and PF8T

Police de code barres

Police

Nom de police : CB_ODEIS Largeur : Extra-étroit

Chiffrement : Occidental (ANSI 1252) ☐ Joindre plusieurs lignes

Options du code barres

Symbolique : Code 128

Dimension X : 0,16 mm Orientation : 0°

Lisible en clair : Aucune Rapport : Automatique

Options spécifiques à la symbolique

☒ Chiffre de contrôle

☐ UCC/EAN - 128

Jeu de codes : C

OK Annuler Aide

Important

The name of the bar code font in ODEIS should "Intermec-" before ("Intermec-CB_ODEIS"). The size of the printed bar code is 15mm

3) Assigning Printers in Odeis

In the menu *Various, Settings, Printers: Tab Labels*

Printers management

Esc - Close F2 - OK F7 - Setup

PRINTERS MANAGEMENT AND POINT OF SALE SYSTEMS

Labels

Label Type	Printer	Driver
ITEMS LABELS A		Driver
ITEMS LABELS B		Driver
ITEMS LABELS C	Intermec PF8t (300 dpi)	Driver
ITEMS LABELS D		Driver
ITEMS LABELS F		Driver
ITEMS LABELS S		Driver
ITEMS LABELS U		Driver
ITEMS LABELS P		Driver
ITEMS LABELS		Driver

POINT OF SALE DISPLAY Port # (x=COMx)

CASH REGISTER Port # (x=COMx)

Card driver Port # (x=COMx)

Biométrie directory Active

POS Terminal F (x=COMx) Moneyline (2000) POS # TEST


Force the default printer

Printers management Win2008

Touchscreen

ELTRON THERMAL PRINTER

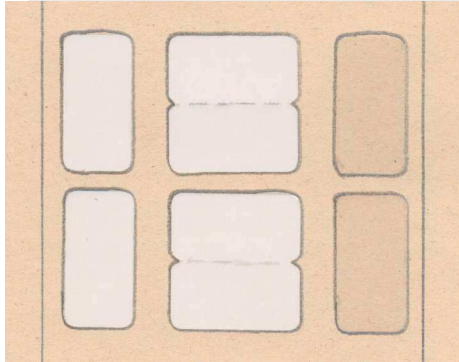
Parallel Serial

For each type used, click on  at the end of the line.
Select the printer corresponding to the type.



ODEIS SETTINGS

1) Setting Type A



Label Modification

Esc - Close F2 - OK

A THERMAL labels

Centring	Model	Options	Bar code
High Margin: 0.0 mm Left Margin: 0.0 mm	Without entourage <input type="checkbox"/> Driver Traditional		

Jewelry

Title + Size
Price in €
Price in €

Reference Cat.
Metal weight Metal weight
Metal weight Metal weight

Lines: 3 4

Watchmaking

Descr.
Price in €
Price in €

Reference Cat.
Size Size
Size Size

Lines: 3 4

Zone 1

☒ Title + Size
☐ Title + Weight
☐ Title + Invoice Date
☐ Title
☐ Title + Weight + Co
☐ Title1 + Weight1 - Title2 + Weight2
☐ P1/carat/clarity/color
☐ Nothing

Select *Without border*
Tick *With driver*.
Select *Classic*

If using the *Driver bar code*, the bar code used is that configured in the printer driver.

This is the preferred solution.

Important: The name of the bar code font created in the driver should be preceded by "Intermec-" for the Intermec and "ZB" for the Zebra.

Select the information to be printed on the label.

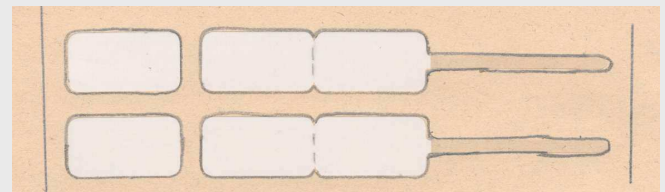
The *top margin* and *left margin* will be defined during the test print (1 and 1 by default).



2) Setting types B and C



Type B



Type C

Label Modification

Esc - Close F2 - OK

B THERMAL labels

Centring	Model	Options	Bar code
High Margin: 0.0 mm Left Margin: 0.0 mm	Without entourage <input checked="" type="checkbox"/> Driver	Support: <input checked="" type="radio"/> Nothing <input type="radio"/> Item <input type="radio"/> Metal title <input type="checkbox"/> Big price <input type="checkbox"/> With black support	<input type="radio"/> 14mm (Code 2/5) <input type="radio"/> 18mm (Code 128) <input checked="" type="radio"/> Driver cod ZB:ODEIS

Jewelry

Title + Size

Price in €
Price in €

Reference Nothing

Vend.item Nothing

Nothing Nothing

Zone 1

☒ Title + Size
☐ Title + Weight
☐ Title + Invoice Date
☐ Title
☐ Title + Weight + Col
☐ Title1 + Weight1 - Title2 + Weight2
☐ P1/carat/clarity/color
☐ Nothing

Watchmaking

Descr.
Price in €
Price in €

Reference Cat.

Size Size
Size Size

Lines
☐ 3 ☒ 4

Select *Without border*
Tick *With driver*.

If using the *Driver bar code*, the bar code used is that configured in the printer driver.

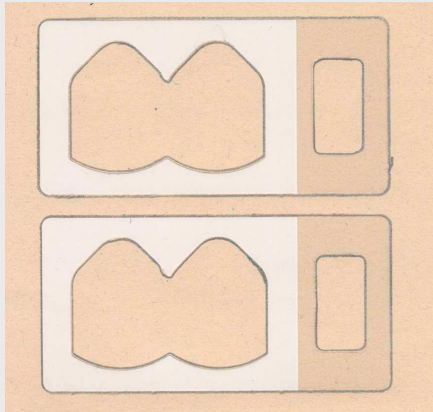
This is the preferred solution.

Important: The name of the bar code font created in the driver should be preceded by "Intermec-" for the Intermec and "ZB" for the Zebra.

Select the information to be printed on the label.
The *top margin* and *left margin* will be defined during the test print.
(1 and 1 by default for B, 1 and -2 by default for C)



3) Setting Type D



Tick *With driver*.

If using the *Driver bar code*, the bar code used is that configured in the printer driver.

This is the preferred solution.

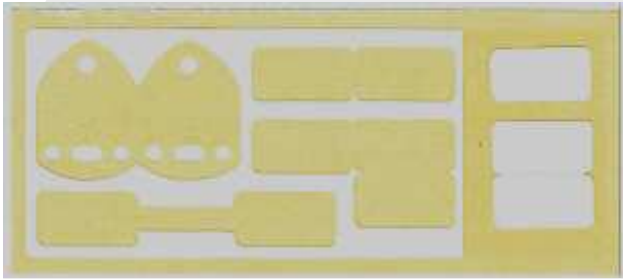
Important: The name of the bar code font created in the driver should be preceded by "Intermec-" for the Intermec and "ZB" for the Zebra.

Select the information to be printed on the label.

The *top margin* and *left margin* will be defined during the test print (8 and -1 by default).



4) Setting Type U



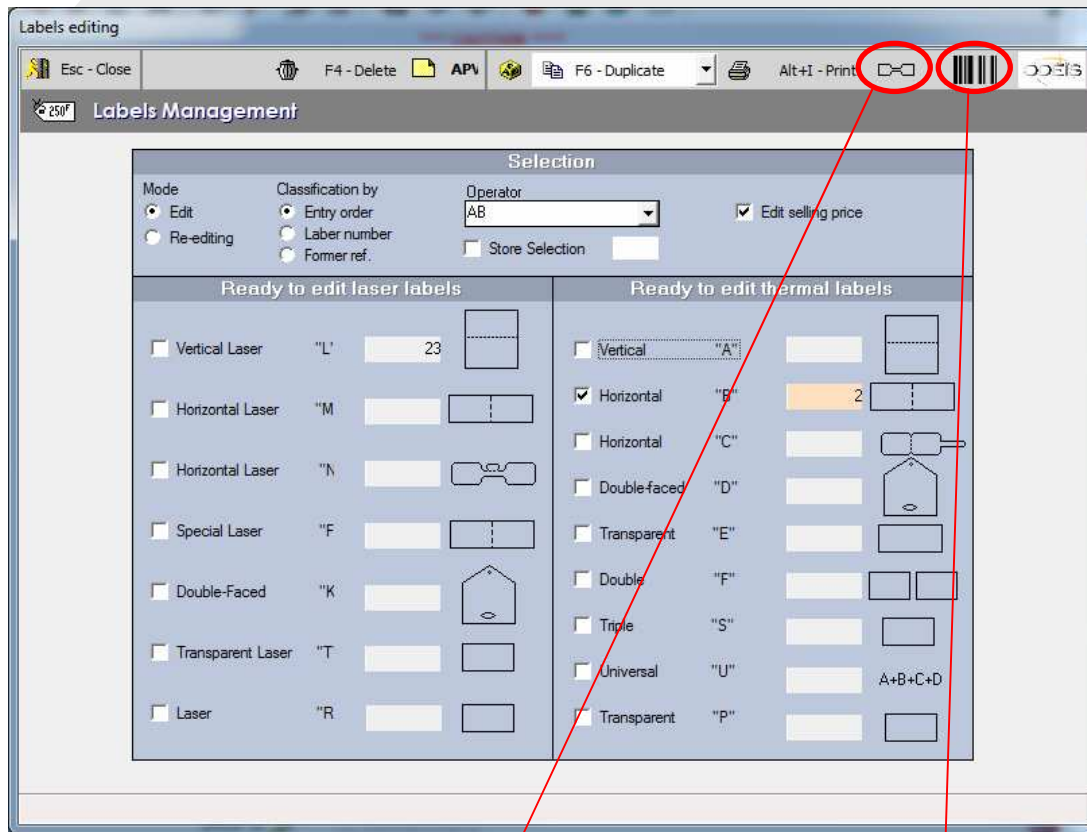
Configuring type U only involves the margins (1 and 3 by default).
The information to print is to be configured respectively for types A, B, C and D.



ODEIS RETAILERS

Label settings A - B - C - D - U - P

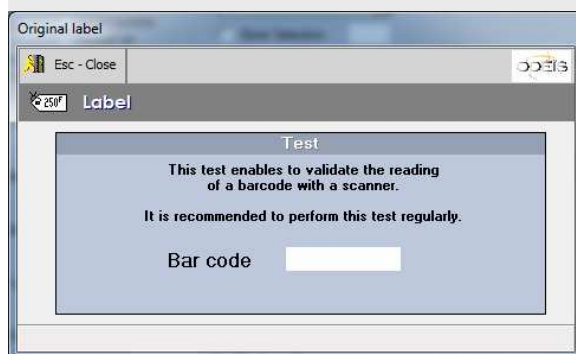
USE IN ODEIS



This button prints a test label.
Before printing all of the labels, you can check that
the labels are correctly framed.

Open the window enabling you to test the
legibility of your bar code.

During the printing of the labels, if a bar code is printed, the window for testing the legibility of the code opens.
However, in the operations settings (tab *stock*), there is a setting which overruns this control.



Beep the code (or type anything), and the printing continues.
You can press "Esc-To close"; you will be asked whether to continue the printing or not.