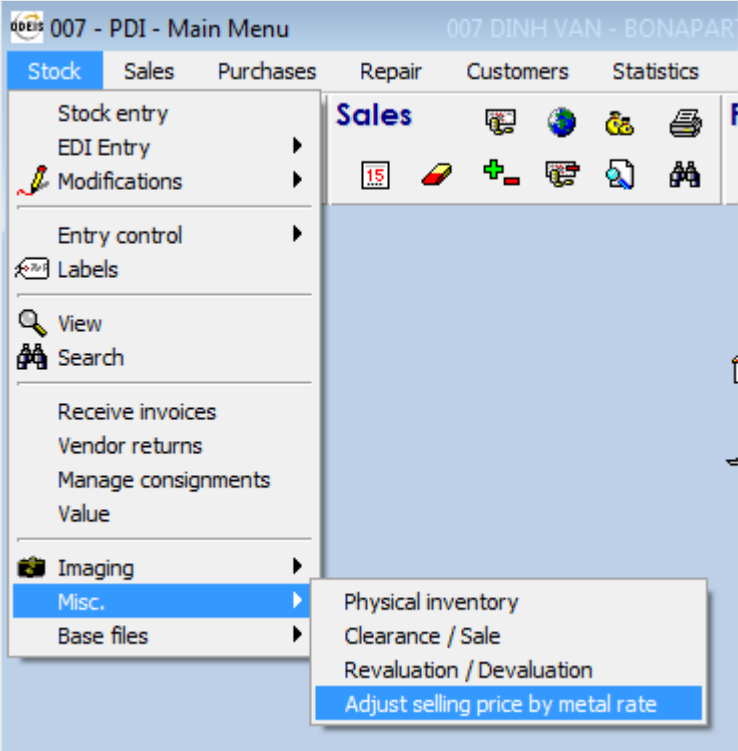




ODEIS RETAILERS

Readjustment of retail price (Incl. VAT) with the metal price





SELECTION OF ARTICLES

Selling price adjustment based on metal

ESC - Close F2 - OK

Selling price adjustment based on rate change with recalculation based on new rate

Selection

Breakdown: ☒ Vend. - Vend. ref. - Category - Metal title - Metal weight
☐ Item reference

Categ. to ACD

Vendor ☐ Exc.

Vend. ref.

Doc. from 01/01/1901 to 14/09/2011

Sell.pr. from 0,00 to 99999 999 999,99

Metal color ☐ Exc.

Metal title ☐ Exc.

Track. code ☐ Exc.

Stat. code ☐ Exc.

Style code ☐ Exc.

Code	Descr.	
100	CHILD WATCH - ALL PRODUCTS	<input checked="" type="checkbox"/>
110	MEN'S WATCHES - DIGITAL	<input type="checkbox"/>
111	MEN'S WATCHES - SPORTS	<input type="checkbox"/>
119	MEN'S WATCHES - VARIOUS	<input type="checkbox"/>
120	MEN'S WATCHES - JEWELLERY	<input type="checkbox"/>
121	MEN'S WATCHES - GOLD	<input type="checkbox"/>
122	MEN'S WATCHES - GOLD AND SILVER	<input type="checkbox"/>
123	MEN'S WATCHES - STAINLESS STEEL	<input type="checkbox"/>
130	MEN'S WATCHES - GOLD PLATED ON METAL	<input type="checkbox"/>
131	MEN'S WATCHES - SILVER ON METAL	<input type="checkbox"/>
132	MEN'S WATCHES - BICOLOUR ON METAL	<input type="checkbox"/>
133	MEN'S WATCHES - OTHER COLOURS ON METAL	<input type="checkbox"/>
134	MEN'S WATCHES - GOLD PLATED ON LEATHER	<input type="checkbox"/>

New selling price calculation :
selling price = Theoretical P.P * usual coef.

Calculation of theoretical P.P :
P.P = former P.P + (metal rate change * metal weight)

The new selling price is rounded based on the price range.
The usual coef is the coef on P.P Net by Vendor/Category
Metal rate change = New rate - initial rate

Indicate Family Code for the Beginning of research

During the selection, you need to specify the breakdown method:
Either you work with the "vendor reference" or with the "ODEIS reference".

If you work with the "vendor reference", it may be that there is a different purchase price, weight or assay for the same supplier reference. Therefore, there may be several lines for the same supplier reference.



NEW RETAIL PRICE (INCL. VAT) CALCULATION

There are 2 methods for calculating the readjustment of the retail price incl. VAT:

The new retail price incl. VAT is rounded according to the price range.

- **By price variation:**

Calculation of the new retail price incl. VAT

Retail price = theoretical purchasing price * usual coeff.

The "usual coeff." is the coeff by Supplier/Family on the net purchase price.

Calculation of the theoretical purchase price

Purchase price = Former Purchase price + (Variation of the metal price * Metal weight)

Metal price variation = New price - Original price

- **By re-calculating using the new price:**

Calculation of the new retail price incl. VAT

Retail price = theoretical purchasing price * usual coeff.

The "usual coeff." is the coeff by Supplier/Family on the net purchase price.

Calculation of the theoretical purchase price

Purchase price = Manufacturing price + (New metal price * Metal weight)



ODEIS RETAILERS

Readjustment of retail price (Incl. VAT) with the metal price

READJUSTMENT OF THE RETAIL PRICE INCL. VAT

Auto feed the entire column

Selling price adjustment based on metal

ESC - Close F2 - Save new selling prices F7 - Query

Selling price adjustment based on rate change with recalculation based on new rate

☒ Generating labels. ☒ Initial rate saved. ☐ Save new rate in the selling rate.

Vend.	Vendor reference	Cat.	Metal title	Weight	P.P NET	Coef.	SELLING PRICE	Qty	Entry	Initial rate	New rate	Theoretical P.P	Usual coef.	New Selling price
DINH	2453050	201	18K	3,50	0,00	0,00	1 200,00	39	Entry					
ROLX	123	140	GOPLA	5,00	150,00	60,00	9 000,00	1	26/08/11	30,00				
ROLX	123	140	GOPLA	5,00	3 000,00	2,70	8 100,00	10	19/08/11	10,00				

Rate : Vendo DINH from 01/01/1901 to 14/09/2011

Vend.	Metal title	Date	Rate
-------	-------------	------	------

New selling price calculation :
selling price = Theoretical P.P * usual coef.

Calculation of theoretical P.P :
 $P.P = \text{former P.P} + (\text{metal rate change} * \text{metal weight})$

The new selling price is rounded based on the price range.
The usual coef is the coef on P.P Net by Vendor/Category
Metal rate change = New rate - initial rate

The table is sorted by reference or by date.

Where it is sorted by date, it still remains grouped by vendor reference.

Only the references with a new price will be modified.

In the case where the purchase price is not filled in, the bottom table allows you to search for a metal price on other supplier invoices.

In addition to the retail price incl. VAT, you can update the *metal purchase price* (if it was incorrect or not initially filled in.)

You can also save the new price in the area *metal retail price* (the area is then "modified")